

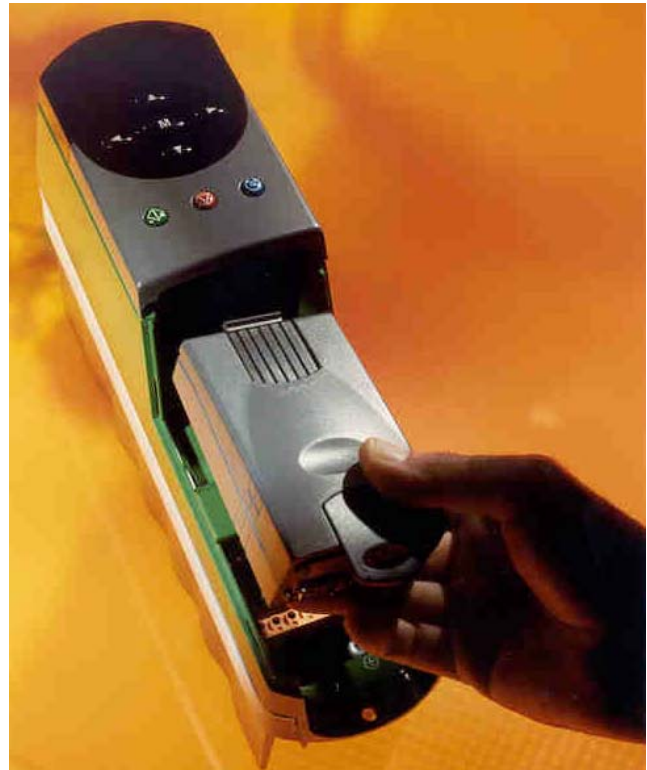
The Application Note is pertinent to our Unidrive Family

Replacement of UD7X Co-Processor Module & Program

Introduction

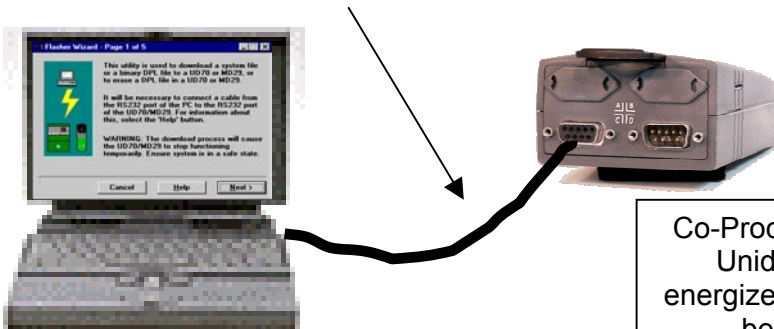
The Unidrive can house a UD7x co-processor (UD70, 73,74,75,76, or 77). These co-processors often (but not always) contain a program that performs a specific function to make the Unidrive perform some special system function. It is imperative that you have a file copy of the program that is contained within your modules. At the very least you must have the compiled executable binary file (file with the extension *****.bin**). Should the module need replaced, this program would need to be download into the co-processor. Replacement units are usually sent out blank. Replacement units can be pre-programmed by our Service Center (716-774-0093) prior to shipment if you have the original program file and could email it to us.

This program file could also be downloaded into the UD7x co-processor if you have a Laptop or similar PC, a programming cable P/N CTD-PC-232-010 and the WinFlash Loader PC program (available from Service Center also).



Programming cable
P/N CTD-PC-232-010

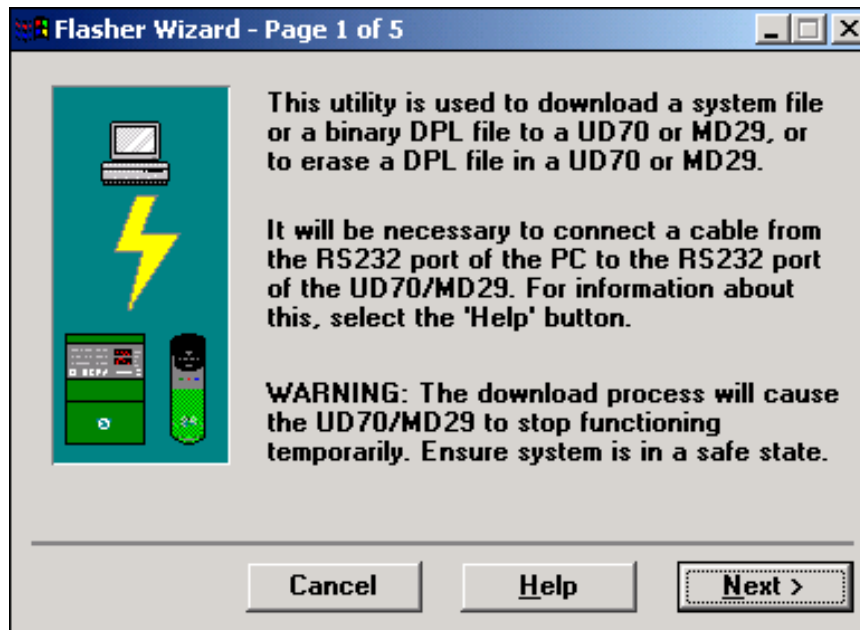
UD70 Co Processor



Co-Processor must be plugged into a Unidrive and the drive must be energized. The drive does not need to be your actual target drive.

Re-Loading the Program File

When WinFlash is run, the main screen will come up as follows:

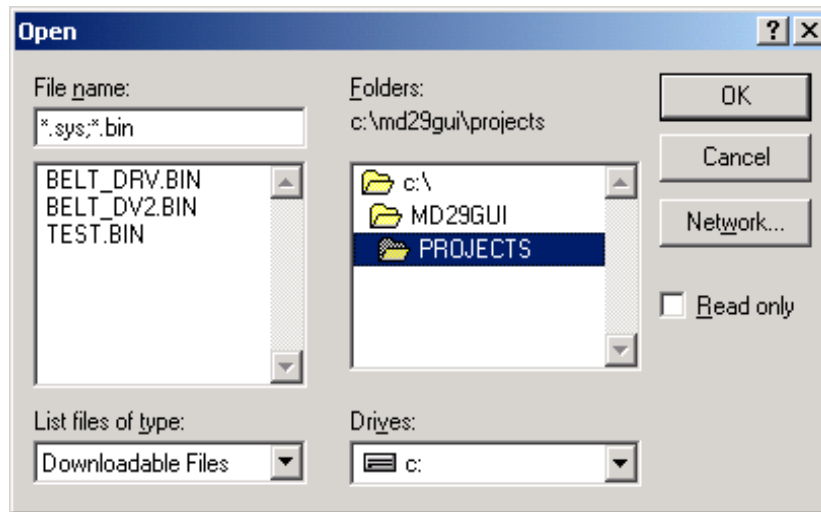


You could read over the paragraph or simply click on Next. This will bring up :



Again, click Next

This will bring up:



Here you must maneuver through your disk directories to find the folder and Program File for your Machine Section (with the extension *****.bin**). Once you have found the desired file, just select that file and click OK.

The next screen will appear as shown below :



If this is the file you selected, click Next once again.

The file should be downloaded as indicated by the Progress Bar.

Questions ?? Ask the Author:

Author: Ray McGranor
(716)-774-0093

e-mail : ray.mcgranor@emersonct.com